


SiteMesh Starter Kit

The SSK (SiteMesh Starter Kit) is a development package to quickly get started with SiteMesh and see a working demonstrations of the first 2 example tutorials.

Download, unzip, launch and import [cafe.war](#) to see SiteMesh in action.

 Microsoft Windows unzip program will not work. Consider the free [7-Zip](#), Winzip or WinRAR.

 For the keepers, read [Portable Development Environment](#) to understand what SSK is exactly composed of.

- [Download](#)
- [Using the SiteMesh Starter Kit on Windows](#)
 - [Start the IDE \(Integrated Development Environment\)](#)
 - [Import cafe WAR File](#)
 - [Optional - Clean Up View](#)
 - [Launch the Default Example](#)
 - [Tutorials](#)


Download

- [SSK for Windows 32-bit and 64-bit, 484MB](#)
- [cafe.war](#)

Using the SiteMesh Starter Kit on Windows

The SiteMesh Starter Kit was put together to be as unobtrusive as possible. As such there is no installation.

In this example, we create an **apps** folder on the C: drive and unzip using [7-Zip](#).

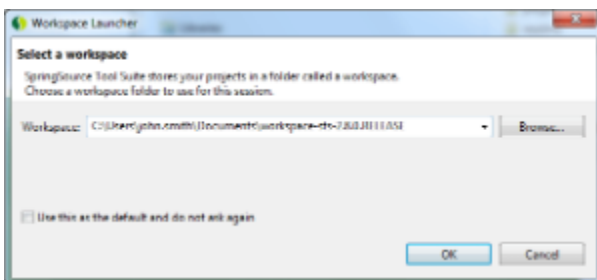
 You may use another folder, but some unzip programs will give you an error about long path names. This is a Windows limitation.

For the rest of this tutorial we will assume you are using the folder **C:\apps\ssk**.

Start the IDE (Integrated Development Environment)

Starting, C:\apps\ssk\sts-2.8.0.RELEASE\STS.exe will launch your development environment.

You will be asked to select a workspace location. This will be where your web application files will be kept. The default is fine,



Import cafe WAR File

Import [cafe.war](#) which contains the first two tutorials,

- [Setup SiteMesh in 5 Minutes or Less](#)
- [Start Using SiteMesh in 10 Minutes](#)

Click **File, Import...** which will result in an import dialog box,



Expand the Web folder by clicking on the selection arrow and select **WAR file**.

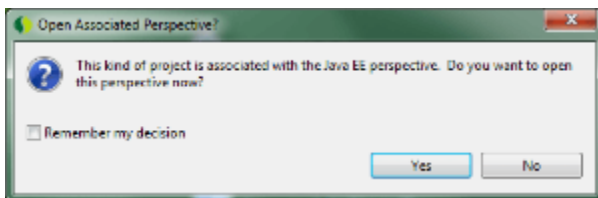
Click **Next**.

Browse to the cafe.war file and select it,



Click **Finish**.

During import you will be asked to open the Java EE perspective,



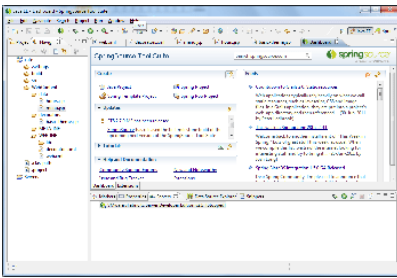
Click **Yes**.

Optional - Clean Up View

By default the IDE hides the real directory structure.

Click **Window, Show View, Navigator**.

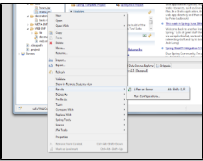
In the **Navigator** Window, expand the **cafe** folder to see the sample sitemesh application in your workspace,



Launch the Default Example

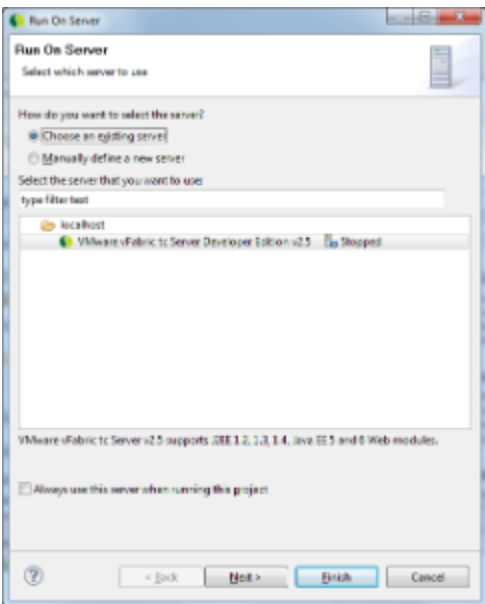
Following through the tutorials the last step is to start the application server and browse to **menu.jsp**.

To do this with the SSK, right click on the file **menu.jsp** and choose **Run on Server**,

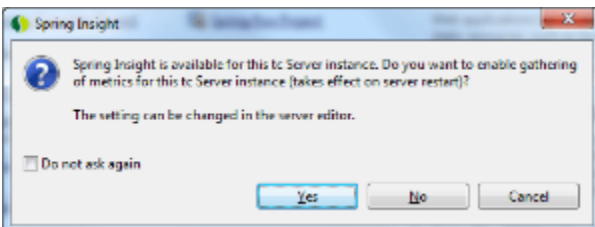


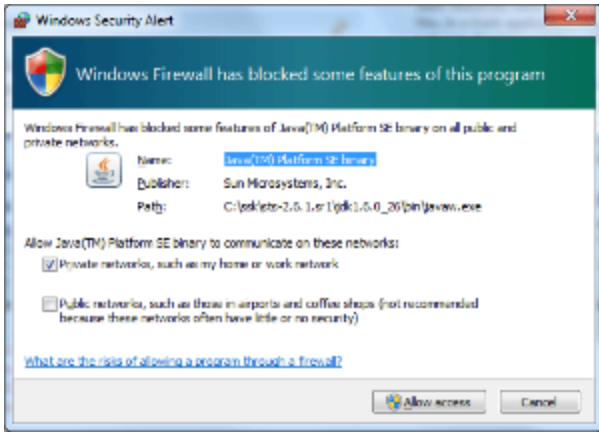
This might take a about a minute so please be patient.

You will then be prompted to select a Server. The defaults are fine. Click the **Finish** button,



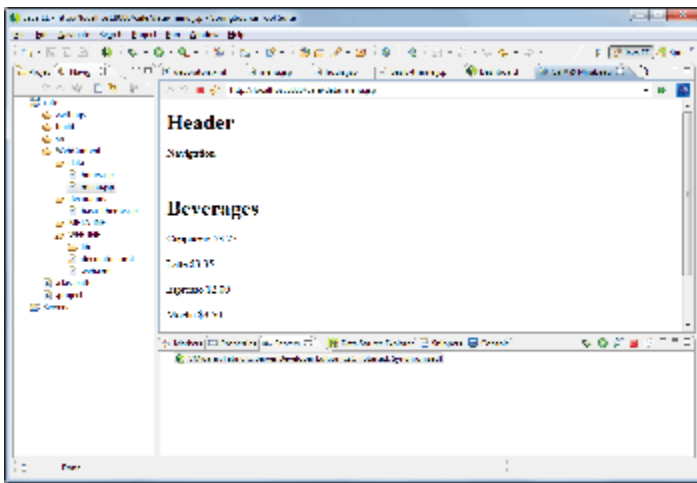
There will be a Spring Insight and depending on your Windows setup a Windows Firewall dialog as shown,





Select **No** to Spring Insight and if prompted **Allow Access** to the Windows Firewall dialog.

If everything succeeds you will see the following screen,



Tutorials

At this point SiteMesh is setup and working. Go straight to [Start Using SiteMesh in 10 Minutes](#) to start being productive.

After that, read up on [Setup Mesh in 5 Minutes](#) for configuration into your own web application.